

TIGUA^{Led} BAY

LED LOW BAY & HIGH BAY



reddot award 2018
winner

Suspended fixtures for Low Bay & High Bay applications

Universal Rectangular Body Size With Large Heat Sink Capacity In EN44300 Aluminium Alloy With Anti Scratch Passivation Treatment and RAL7011 Colour Finish.

Flexible relamping:

Complete availability of accessories for any installation need.

Plug & Play Electrical Connection

5 x 1.5mm² terminals

Light weight and compact

Easy to install weighing only 6.5 kg

Uniform Lighting

Multiple photometric solutions based on 5 Beam angles utilizing PMMA or PC Lenses

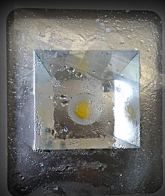
Great versatility

The versatility of the available light outputs allows the ideal solution for any lowbay and highbay application.

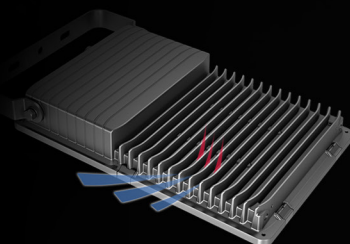
High protection:

The control gears are self-protected against the surges present on the industrial electricity networks up to 8kV

Key features



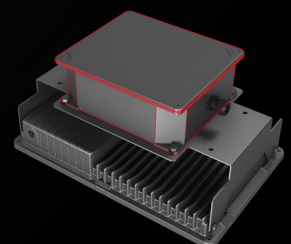
Anti condensation breather valve to vent pressure build-up inside the light fixture



Heat Dissipation is aided by The LED & Power Supply Positioning



Large Heat Sink Capacity In EN44300 Aluminium Alloy With Anti Scratch Passivation Treatment.



Emergency versions available

TIGUA^{Led} BAY

LED LOW BAY & HIGH BAY



1-10 V
DIMMABLE



IP66
Dust and water
jets/immersion



IK08
High level of
impact resistance



TECHNICAL
SUPPORT
LDT files & lighting
schemes



CORROSION
C4
as per ISO 9223



FLICKER
FREE
< 1%

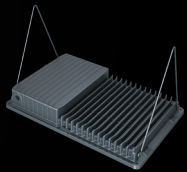


RISK
GROUP
ZERO

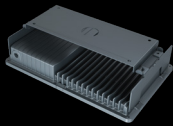


ENERGY
SAVING

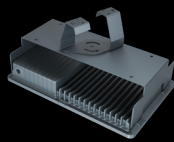
Suspension options



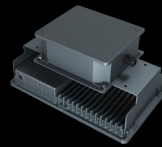
Double chain
is standard



Ceiling
mounting



Double
chain adjustable



Emergency
bracket

Technical specifications

Conformity to standards

Directive 2014/35/UE
EN 60598-1: 2015
EN 60598-2-1:1997
EN 60598-2-5: 2015
EN 60598-2-22: 2014
EN 62471: 2008
Directive 2014/30/UE
EN 62493: 2015
Directive 2011/65/UE
ENEC approval in progress

Body material

EN 44300 die-cast aluminium

Surface treatment

Passivation with zirconium-fluoro

Diffuser material

Extraclear tempered glass
or polycarbonate

Painting

Hot polymerized
non-toxic polyester

Colour

RAL 7011

Weight

6,5 kg

LED device efficiency

≥ 110 lm/W

LED Colour Temperature

4000K

CRI

≥ 80

Insulation class

I

Rated voltage

200-240 V 50-60 Hz (others in request)

Protection against surge discharges

8 kV common mode
6 kV differential mode
EN 61000 (10kV on request)

Power factor

≥ 0,95

Unified Glare Rating (UGR)

< 22

Max cable section

1,5 mm²

Entry cable diameter

7-13 mm

Emergency battery lifetime

3 h

Estimated device lifetime

L80B20 @ 120.000h Tq=-30 °C - +40 °C

Storage temperature

-40 °C - +70 °C

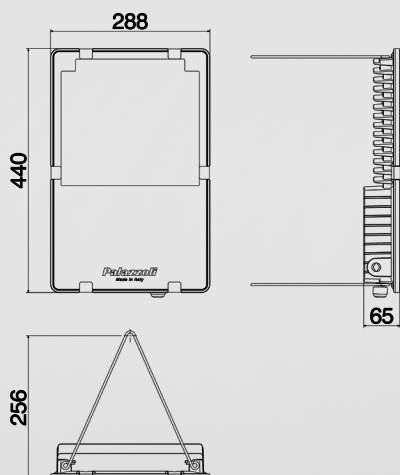
Operating temperature

-30 °C - +40 °C (on request up to +55°C
or other special configurations)



Tigua Bay

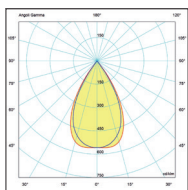
LED Low Bay & High Bay Lighting - For Industrial Use



Extra wide beam

Glass Diffuser

Typical height of installation between 4m and 7m

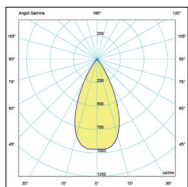


Power (W)	Luminous flux (lm) Tj= 25 °C	Part numbers	Power Supply
33W	4625LM	817304	1-10V Dimmable Electronic
67W	9250LM	817308	
99W	13875LM	817312	
132W	18500LM	817316	
164W	23125LM	817320	
196W	27750LM	817324	
33W	4625LM	817305	Emergency
67W	9250LM	817309	
99W	13875LM	817313	
132W	18500LM	817317	
164W	23125LM	817321	
196W	27750LM	817325	

Medium beam

Glass Diffuser


Typical height of installation between 5m and 8m



Power (W)	Luminous flux (lm) Tj= 25 °C	Part numbers	Power Supply
33W	4625LM	817354	1-10V Dimmable Electronic
67W	9250LM	817358	
99W	13875LM	817362	
132W	18500LM	817366	
164W	23125LM	817370	
196W	27750LM	817374	
33W	4625LM	817355	Emergency
67W	9250LM	817359	
99W	13875LM	817363	
132W	18500LM	817367	
164W	23125LM	817371	
196W	27750LM	817375	

 **1-10V DIMMABLE**
Dali on request

 **CORROSION C4**
as for Per ISO9223

 **IP66**
Dust and water jets/immersion

 **IK08**
High impact resistance

 **ENERGY SAVING**

CLASSIFICATION

Insulation Class I

LED

4000K

CRI>80

CONSTRUCTION

Body: EN44300 aluminium alloy

Diffuser: Extra clear tempered glass

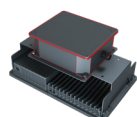
Anti-scratch passivation treatment

Equipment included:

Support brackets for double chain and busbar trunking

Electrical supply through rapid connector

Note: the declared values may be subject to a tolerance of +/- 7%

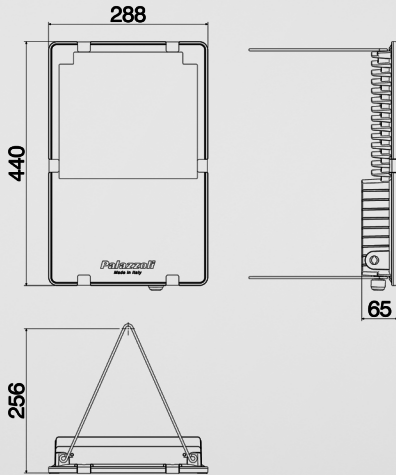


EMERGENCY

Emergency pack 811924 is required with Emergency lighting fixtures

Tigua Bay

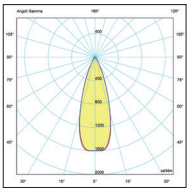
LED Low Bay & High Bay Lighting - For Industrial Use



Narrow beam

Glass Diffuser

Typical height of installation above 6m

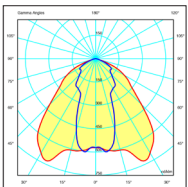


Power (W)	Luminous flux (lm) Tj= 25 °C	Part numbers	Power Supply
33W	4625LM	817404	1-10V Dimmable Electronic
67W	9250LM	817408	
99W	13875LM	817412	
132W	18500LM	817416	
164W	23125LM	817420	
196W	27750LM	817424	
33W	4625LM	817405	Emergency
67W	9250LM	817409	
99W	13875LM	817413	
132W	18500LM	817417	
164W	23125LM	817421	
196W	27750LM	817425	

Elliptical beam

Glass Diffuser


Suitable for high reach installations



Power (W)	Luminous flux (lm) Tj= 25 °C	Part numbers	Power Supply
33W	4625LM	817454	1-10V Dimmable Electronic
67W	9250LM	817458	
99W	13875LM	817462	
132W	18500LM	817466	
164W	23125LM	817470	
196W	27750LM	817474	
33W	4625LM	817455	Emergency
67W	9250LM	817459	
99W	13875LM	817463	
132W	18500LM	817467	
164W	23125LM	817471	
196W	27750LM	817475	

 **1-10V DIMMABLE**
Dali on request

 **CORROSION C4**
as for Per ISO9223

 **IP66**
Dust and water jets/immersion

 **IK08**
High impact resistance

 **ENERGY SAVING**

CLASSIFICATION

Insulation Class I

LED

4000K

CRI>80

CONSTRUCTION

Body:EN44300 aluminium alloy

Diffuser: Extra clear tempered glass

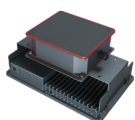
Anti-scratch passivation treatment

Equipment included:

Support brackets for double chain and busbar trunking

Electrical supply through rapid connector

Note: the declared values may be subject to a tolerance of +/- 7%



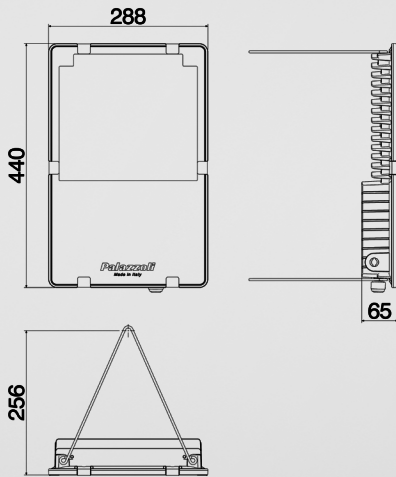
EMERGENCY

Emergency pack 811924 is required with Emergency lighting fixtures



Tigua Bay

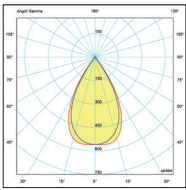
LED Low Bay & High Bay Lighting - For Use in Food Industry (HACCP)



Extra wide beam

Polycarbonate Diffuser

Typical height of installation between 4m and 7m

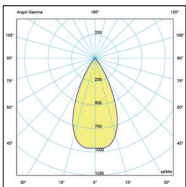


Power (W)	Luminous flux (lm) Tj= 25 °C	Part numbers	Power Supply
33W	4625LM	817504	1-10V Dimmable Electronic
67W	9250LM	817508	
99W	13875LM	817512	
132W	18500LM	817516	
164W	23125LM	817520	
196W	27750LM	817524	
33W	4625LM	817505	Emergency
67W	9250LM	817509	
99W	13875LM	817513	
132W	18500LM	817517	
164W	23125LM	817521	
196W	27750LM	817525	

Medium beam

Polycarbonate Diffuser


Typical height of installation between 5m and 8m



Power (W)	Luminous flux (lm) Tj= 25 °C	Part numbers	Power Supply
33W	4625LM	817554	1-10V Dimmable Electronic
67W	9250LM	817558	
99W	13875LM	817562	
132W	18500LM	817566	
164W	23125LM	817570	
196W	27750LM	817574	
33W	4625LM	817555	Emergency
67W	9250LM	817559	
99W	13875LM	817563	
132W	18500LM	817567	
164W	23125LM	817571	
196W	27750LM	817575	

 **1-10V DIMMABLE**
Dali on request

 **CORROSION C4**
as for Per ISO9223

 **IP66**
Dust and water jets/immersion

 **IK08**
High impact resistance

 **ENERGY SAVING**

CLASSIFICATION

Insulation Class I

LED

4000K

CRI>80

CONSTRUCTION

Body:EN44300 aluminium alloy

Diffuser:HACCP approved

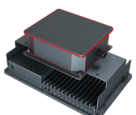
Polycarbonate

Equipment included:

Support brackets for double chain and busbar trunking

Electrical supply through rapid connector

Note: the declared values may be subject to a tolerance of +/- 7%

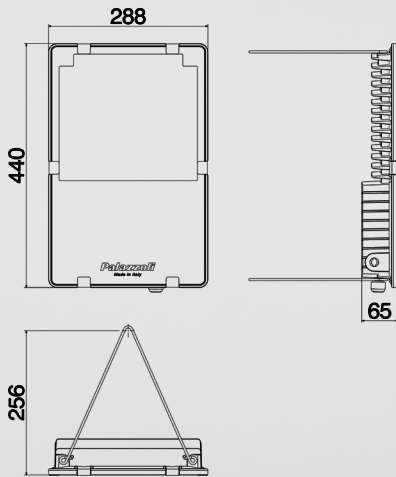


EMERGENCY

Emergency pack 811924 is required with Emergency lighting fixtures

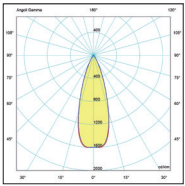
Tigua Bay

LED Low Bay & High Bay Lighting - For Use in Food Industry (HACCP)



Narrow beam

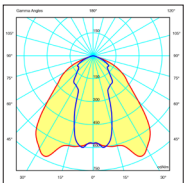
Polycarbonate Diffuser
Typical height of installation above 6m



Power (W)	Luminous flux (lm) Tj= 25 °C	Part numbers	Power Supply
33W	4625LM	817604	1-10V Dimmable Electronic
67W	9250LM	817608	
99W	13875LM	817612	
132W	18500LM	817616	
164W	23125LM	817620	
196W	27750LM	817624	
33W	4625LM	817605	Emergency
67W	9250LM	817609	
99W	13875LM	817613	
132W	18500LM	817617	
164W	23125LM	817621	
196W	27750LM	817625	

Elliptical beam


Polycarbonate Diffuser
Suitable for high reach installations



Power (W)	Luminous flux (lm) Tj= 25 °C	Part numbers	Power Supply
33W	4625LM	817654	1-10V Dimmable Electronic
67W	9250LM	817658	
99W	13875LM	817662	
132W	18500LM	817666	
164W	23125LM	817670	
196W	27750LM	817674	
33W	4625LM	817655	Emergency
67W	9250LM	817659	
99W	13875LM	817663	
132W	18500LM	817667	
164W	23125LM	817671	
196W	27750LM	817675	

 **1-10 V DIMMABLE**
Dali on request

 **CORROSION C4**
as for Per ISO9223

 **IP66**
Dust and water jets/immersion

 **IK08**
High impact resistance

 **ENERGY SAVING**

CLASSIFICATION

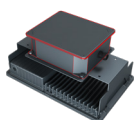
Insulation Class I

LED
4000K
CRI>80

CONSTRUCTION

Body:EN44300 aluminium alloy
Diffuser:HACCP approved Polycarbonate

Equipment included:
Support brackets for double chain and busbar trunking
Electrical supply through rapid connector
Note: the declared values may be subject to a tolerance of +/- 7%



EMERGENCY

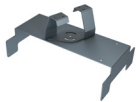
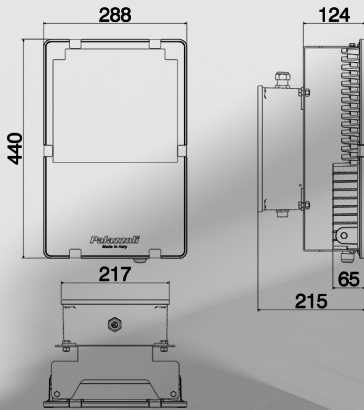
Emergency pack 811924 is required with Emergency lighting fixtures



Tigua Bay

LED Low Bay & High Bay Lighting - ACCESSORIES

Dimensions with Emergency Kit



Support bracket for 0-90° adjustable double chain suspension

Manufacturing Material

Electrogalvanized steel

Part number

811919



Support bracket for ceiling mounting

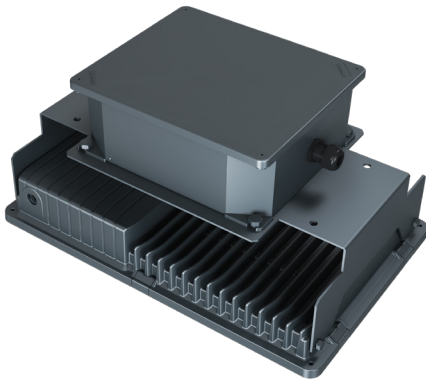
Manufacturing Material

Electrogalvanized steel

Part number

811916

Kit for emergency



Manufacturing Material

Boxes in aluminium alloy and bracket in Electrogalvanized steel

Emergency battery lifetime

3h 811924

Luminous flux (lm) Tj= 25 °C

4625LM

9250LM

13875LM

18500LM

23125LM

27750LM

Flux in emergency (lm) 1-3h

995



1-10 V DIMMABLE
Dali on request



CORROSION C4
as for Per ISO9223



IP66
Dust and water jets/immersion



IK08
High impact resistance



ENERGY SAVING

CLASSIFICATION

Insulation Class I

LED

4000K

CRI>80

CONSTRUCTION

Body:EN44300 aluminium alloy

Diffuser:Extra clear tempered glass

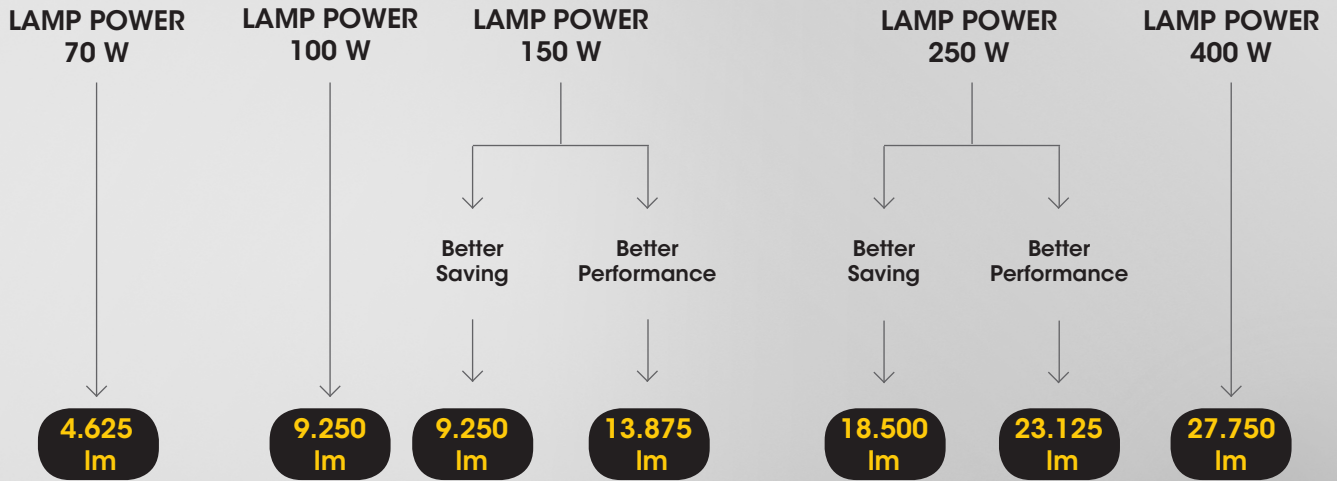
Anti-scratch passivation treatment

Equipment included:

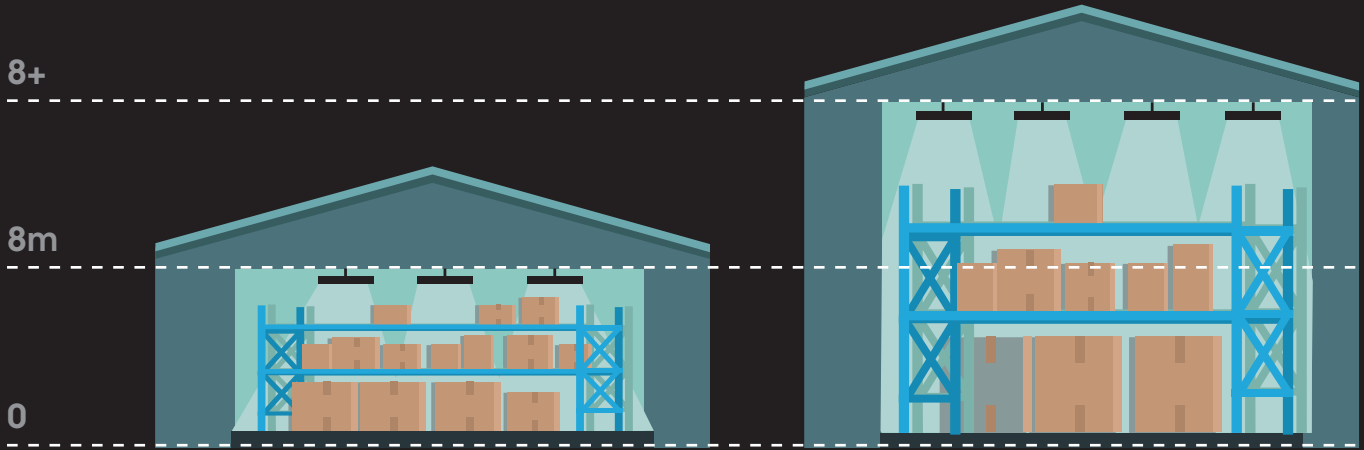
The emergency kit is complete with junction box, battery, inverter and support for rapid pendant suspension.

Characteristics: No. 1 M20 entry; No. 1 output with connector.

Note: The support is suited for mounting fixed on double chain.



Installation height



From 4 to 8 metres

Extra-wide or medium beam

Above 8 metres

Narrow beam

